

BIPOL Video Pole Camera PT L

Our PT-L pole camera offers a reliable inspection solution to security forces, rescue and emergency units, police, special forces and to the industrial sector.

Delivered with a motorized rotative camera with talk/back function, it allows inspection of buildings, containers, infrastructures such as bridges, trucks, or industrial sites among others.

2 types of illumination are available : White LEDs or Infrared 940 Nm (non visible to human eye)

PAN & TILT
CAMERA

7.0" TOUCH
SCREEN

Up to 8.5 meters
CARBON FIBER POLE

TALK BACK FUNCTION
WITH HEADSET



with Headset

Allows recording &
dual way communication



Pan & Tilt rotative Camera

PT-CIP65W
PT-CIP65IR94



View Video on
Youtube

PAN&TILT IP65 CAMERA WITH TALK BACK

The fully motorized camera can rotate on 360° on its axis and
340° up or down.
White LED or IR 940 Nm



Easy control of :
light adjustment
Camera rotation
Photo or Video recording



CARBON EXTENSION POLE

Extensible up to 8.5 m
depending on version



7.0" LCD Touch Screen

Rubber protective cover to 4 corners, can be removed

Waterproof grade: IP65

Neck strap is removeable and adjustable

7 inch full view(1280*800pix) IPS Touch screen

Touch screen and buttons both work

Video input: AHD and CVBS video input, TVI and CVBS video input

Connector: M12 4pins (Same as DS9008/DS98)

Video Output: HDMI 1080P

Support 4K, 2K, 1080P Record, photo, playback, 10 times zoom

Video compression format: H.264

Max Storage: up to 256GB TF card

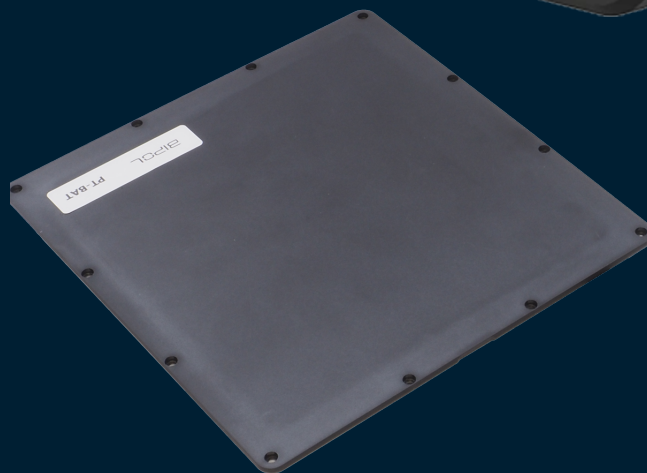
Compressed video and audio are synchronous

Built-in 4200mAh high capacity Li-battery, Battery is exchangeable

Working Voltage: DC 12V 2A

Support 12 Voltage power output for camera

Supports multi-language.



**SPARE DETACHABLE BATTERY
IN OPTION**

PT L Set

WHAT WE DELIVER

1 IP65 P&T camera white LEDs or IR 940NM with talk back function - 1 touchscreen monitor 7.0" - 1 HDMI cable - 1 AC charger - 1 USB Cable - 1 SD Card 32 GB
1 rugged carrying case - 1 instruction manual -
1 cleaning kit BIPOL.



Technical Data

7.0” Touch Screen Recording Monitor

Display	7 inch 1280 * 800 px
Touch screen process	In cell original capacitive touch
Dimensions	211x41x28mm 800 gr
Brightness	500 cd/m2
Video In	5MP AHD
Video Out	HDMI 1080P
Video recording	MP4
Interface	Type C
Memory card	32 GB TF card (accepts up to 256GB)
Power Supply	DC 12V 2.5A
Battery	4200mAh(detachable)
Complete working time	4-5 hours
Waterproof grade	IP65
Case dimensions	L*W*H 119x14x21cm - 7.5 KG

IP65 P&T Talk-back Camera

Camera Resolution	5MP Cmos 2560*1944 PX
light source	12 LEDs - White or IR 940nm
Minimum illumination	0.0001Lux/F1.2
Lens	2.8mm F2.0 134.7°
Focal length	20 cm 100 cm
PTZ rotate	Horizontal: 360 ° circular Vertical:270°
Dimensions	ø39mm ,Length :153mm
Audio recording	48dB, 1W speaker (suitable 300 m2)

Extension pole

Material	Carbon fiber
Unfold length	5.0 m or 8.5m
Fold length	1.38 m

How to order

PT-L	Telescopic Pole camera 5m 7" LCD Screen in case - White LEDs Pan & tilt Camera
PT-L-IR	Telescopic Pole camera 5m 7" LCD Screen in case - IR 940 NM Pan & tilt Camera
PT-L8	Telescopic Pole camera 8.5m 7" LCD Screen in case - White LEDs Pan & tilt Camera
PT-L-IR8	Telescopic Pole camera 8.5m 7" LCD Screen in case - IR 940 NM Pan & tilt Camera
PTL-BAT	Spare battery for 7" Screen
PT-CIP65W	Camera IP65 Pan and Tilt White light with talk back function
PT-CIP65IR94	Camera IP65 Pan and Tilt Infrared 940 NM with talk back function