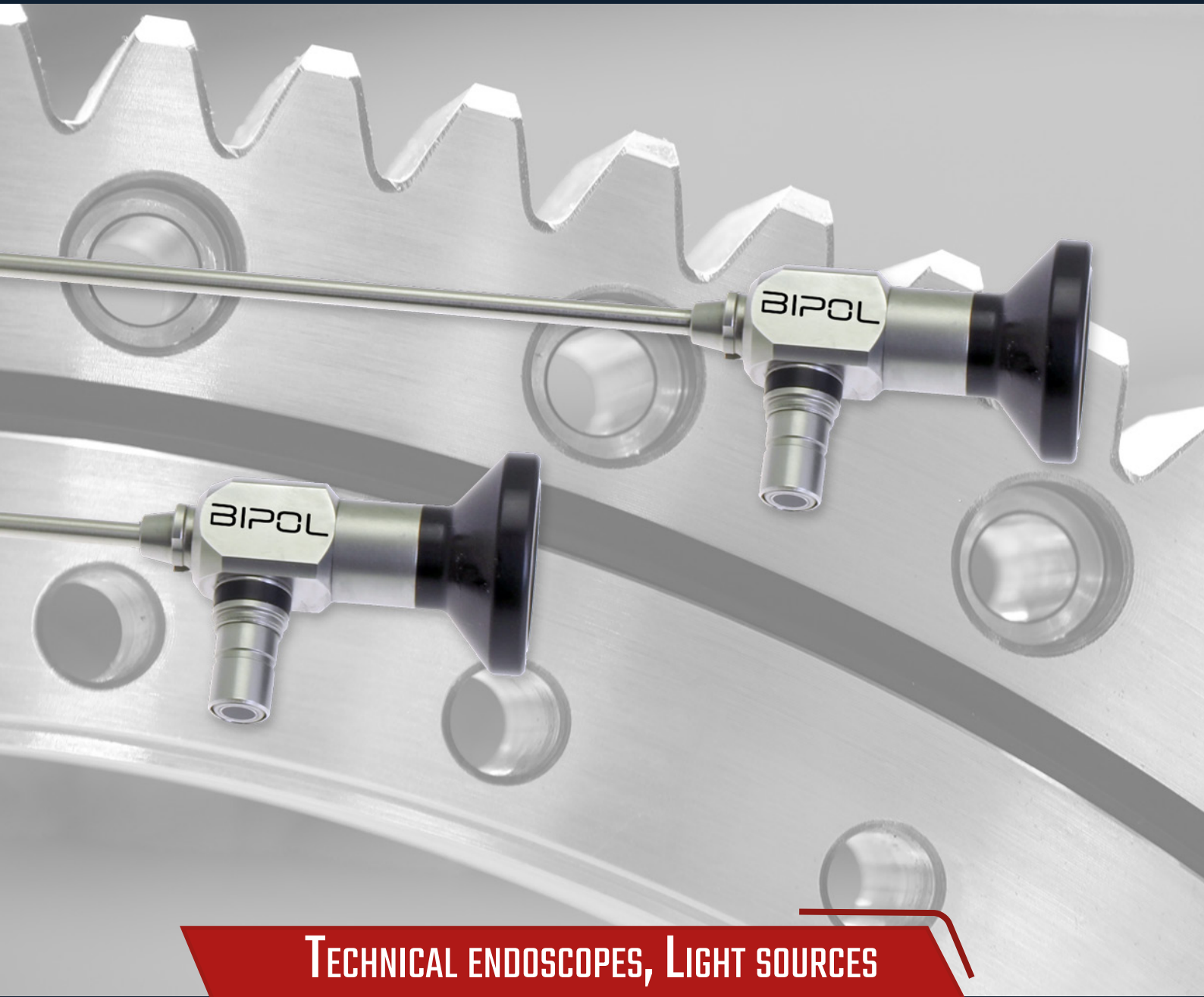


BIPOL



TECHNICAL ENDOSCOPES, LIGHT SOURCES
& VIDEO DOCUMENTATION

2025



BIPOL



Quality, Service, Expertise since 1971

About us

Bipol is a french family business founded in 1971. Initially specializing in the sector of polishing and finishing products for the anodizing and surface treatment industry, we have specialized in the field of technical endoscopy since 1991, in order to meet growing demand. We are one of the first French companies to distribute industrial video endoscopes.

Our main sectors of activity :

- Aerospace
- Airspace
- Automotive & Transports
- Industrial process
- Infrastructures
- Nuclear & energy production
- Quality control
- R&D
- Security forces

- **54** years of business experience
- **2** main activities
- **3** ISO certifications
- **500+** satisfied customers
- **40+** delivery to more than 40 countries



CUSTOMER SERVICE

Quick products availability. Demo units can be sent for testing before any purchase. Bipol offers on-site repairs and personalized quotes established on a case-by-case basis.



PARTNERS

Our network is made up of experts selected for their know-how and professionalism.

It offers you local product support and customer service.



QUALITY COMMITMENTS

Bipol strives to deliver the highest level of service, based on regulations and standards.



Qualitas Veritas
ISO 14001-2015



Qualitas Veritas
ISO 9001-2015

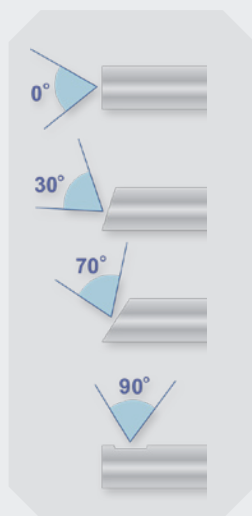


Qualitas Veritas
ISO 45001-2018



AMONG OUR CUSTOMERS





Direction of vision

- Outer tube, body and light guide connector in stainless steel.
- Standard ISO 32mm ocular.
- Optical lens system for improved image.
- Clear image from 1mm to infinity.
- Resistance to fuels, oils, water and most industrial solvents.
- Working temperatures: - 40°/121°C.

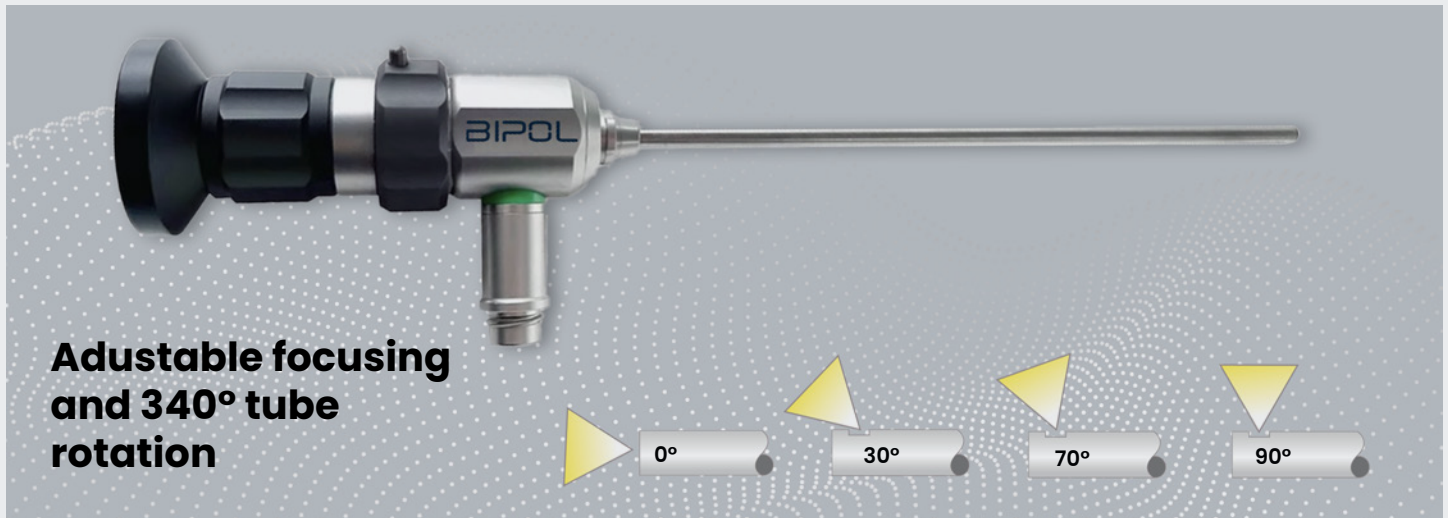
Part No	Diameter mm	WL mm	DoV	Field
SV - Ø 1,6 mm Large Field of view				
SV16-100-0-90	1.6	100	0°	90°
SV16-100-30-90	1.6	100	30°	65°
SV16-175-0-90	1.6	175	0°	90°
SV16-175-30-65	1.6	175	30°	65°
Protection sheaths for 1,6mm				
SV16-100-0-SR	1.9	100	0°	-
SV16-100-30-SR	1.9	100	30°	-
SV16-175-0-SR	1.9	175	0°	-
SV16-175-30-SR	1.9	175	30°	-
SV-S Ø 1,6 mm standard field of view (accepts mirror tube 90°)				
SV16-100-0-40	1.6	100	0°	40°
SV16-175-0-40	1.6	175	0°	40°
Removable mirror tubes for 1,6 mm SV-S				
SV16-100-0-MT	1.9	100	90°	-
SV16-175-0-MT	1.9	175	90°	-

Part No	Diameter mm	WL mm	DoV	Field
Ø 2.7 mm				
SV27-40-0-75	2.7	40	0°	75°
SV27-40-30-75	2.7	40	30°	75°
SV27-40-70-75	2.7	40	70°	75°
SV27-110-0-75	2.7	110	0°	75°
SV27-110-30-75	2.7	110	30°	75°
SV27-110-70-75	2.7	110	70°	75°
SV27-175-0-75	2.7	175	0°	75°
SV27-175-30-75	2.7	175	30°	75°
SV27-175-70-75	2.7	175	70°	75°
SV27-175-90-65	2.7	175	90°	65°
SV27-300-0-75	2.7	300	0°	75°
SV27-300-30-75	2.7	300	30°	75°
SV27-300-70-75	2.7	300	70°	75°

For the model 2.7mm with 90° Dov, the minimum diameter of holes is 5.5 mm

Part No	Diameter mm	WL mm	DoV	Field
Ø 4.0 mm				
SV40-45-0-75	4.0	45	0°	75°
SV40-45-70-75	4.0	45	70°	75°
SV40-175-0-85	4.0	175	0°	85°
SV40-175-30-85	4.0	175	30°	85°
SV40-175-70-85	4.0	175	70°	85°
SV40-175-90-65	4.0	175	90°	65°
SV40-175-0-105	4.0	175	0°	105°
SV40-175-30-105	4.0	175	30°	105°
SV40-175-70-105	4.0	175	70°	105°
SV40-300-0-85	4.0	300	0°	85°
SV40-300-30-85	4.0	300	30°	85°
SV40-300-70-85	4.0	300	70°	85°
SV40-300-90-65	4.0	300	90°	65°

For the model 4.0 mm with 90° Dov, the minimum diameter of holes is 7.5 mm



Adjustable focusing and 340° tube rotation

Our SV-R line rigid rotating endoscopes are used for the visual inspection of very different cavities and bores in microscopic as well as macroscopic areas for visual inspection. The rotatable light source connection and focus function increase efficiency and enable maximum flexibility when carrying out your inspections in everyday work.

- Outer tube, body and light guide connector in stainless steel.
- Standard ISO 32mm ocular.
- Optical lens system for improved image.
- Clear image from 1mm to infinity.
- Resistance to fuels, oils, water and most industrial solvents.

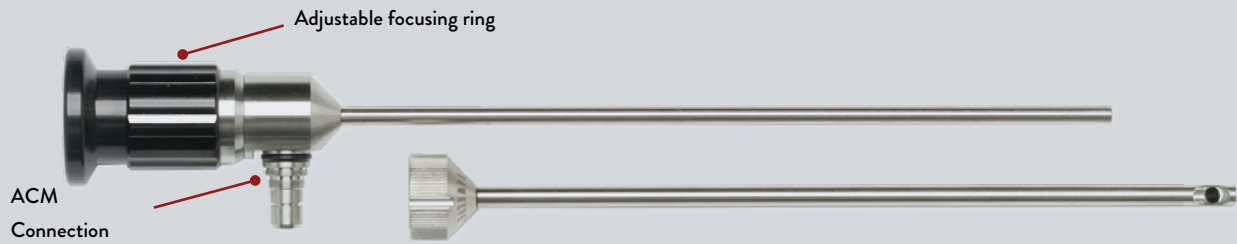
Part No	Ø mm	W.L. mm	DoV	Field	Protection sheath
Ø 2.9 mm					
SVR29-150-0-80	2.9	150	0°	80°	SVR29-150-0-SR
SVR29-150-30-80	2.9	150	30°	80°	SVR29-150-30-SR
SVR29-150-70-80	2.9	150	70°	80°	SVR29-150-70-SR
SVR29-150-90-80	2.9	150	90°	80°	SVR29-150-90-SR
SVR29-220-0-80	2.9	220	0°	80°	SVR29-220-0-SR
SVR29-220-30-80	2.9	220	30°	80°	SVR29-220-30-SR
SVR29-220-70-80	2.9	220	70°	80°	SVR29-220-70-SR
SVR29-220-90-80	2.9	220	90°	80°	SVR29-220-90-SR
SVR29-280-0-80	2.9	280	0°	80°	SVR29-280-0-SR
SVR29-280-30-80	2.9	280	30°	80°	SVR29-280-30-SR
SVR29-280-70-80	2.9	280	70°	80°	SVR29-280-70-SR
SVR29-280-90-80	2.9	280	90°	80°	SVR29-280-90-SR

Part No	Ø mm	W.L. mm	DoV	Field	Protection sheath
Ø 3.8 mm					
SVR38-150-0-100	3.8	150	0°	100°	SVR38-150-0-SR
SVR38-150-30-100	3.8	150	30°	100°	SVR38-150-30-SR
SVR38-150-70-100	3.8	150	70°	100°	SVR38-150-70-SR
SVR38-150-90-100	3.8	150	90°	100°	SVR38-150-90-SR
SVR38-220-0-100	3.8	220	0°	100°	SVR38-220-0-SR
SVR38-220-30-100	3.8	220	30°	100°	SVR38-220-30-SR
SVR38-220-70-100	3.8	220	70°	100°	SVR38-220-70-SR
SVR38-220-90-100	3.8	220	90°	100°	SVR38-220-90-SR
SVR38-280-0-100	3.8	280	0°	100°	SVR38-280-0-SR
SVR38-280-30-100	3.8	280	30°	100°	SVR38-280-30-SR
SVR38-280-70-100	3.8	280	70°	100°	SVR38-280-70-SR
SVR38-280-90-100	3.8	280	90°	100°	SVR38-280-90-SR
SVR38-340-0-100	3.8	340	0°	100°	SVR38-340-0-SR
SVR38-340-30-100	3.8	340	30°	100°	SVR38-340-30-SR
SVR38-340-70-100	3.8	340	70°	100°	SVR38-340-70-SR
SVR38-340-90-100	3.8	340	90°	100°	SVR38-340-90-SR
SVR38-470-0-100	3.8	470	0°	100°	SVR38-470-0-SR
SVR38-470-30-100	3.8	470	30°	100°	SVR38-470-30-SR
SVR38-470-70-100	3.8	470	70°	100°	SVR38-470-70-SR
SVR38-470-90-100	3.8	470	90°	100°	SVR38-470-90-SR
SVR38-630-0-100	3.8	630	0°	100°	SVR38-630-0-SR
SVR38-630-30-100	3.8	630	30°	100°	SVR38-630-30-SR
SVR38-630-70-100	3.8	630	70°	100°	SVR38-630-70-SR
SVR38-630-90-100	3.8	630	90°	100°	SVR38-630-90-SR



Stainless steel protection sheath on all models

For model 2.9mm, diameter increases to 3.6mm.
For model 3.8mm, diameter increases to 5.0mm



Very large range of rigid industrial endoscopes. Superior optical quality. Integrates a light concentrator for better illumination.

They all accept 90° removable and rotative mirror tubes and stainless steel protection sleeves for shock protection. Our line of Ecofix Pro is available on short notice. The exclusive lens system allows to offer very competitive repair costs. It gives excellent results in video endoscopy.

They can be made to operate up to 300°C on demand and are compatible with UV endoscopy applications.



The Endogrins® optical relay of the Ecofix PRO range allows to offer an excellent and bright image quality. Repairs can be done quickly at a fixed cost



ENDOSCOPES ECOFIX PRO				
Part No	Ø mm	W.L. mm	DoV	Field
Ø 1.85mm (Not compatible with video application)				
EP.18.0.40	1.85	80	0°	40°
EP.18.127.40	1.85	127	0°	40°
EP.18.180.40	1.85	180	0°	40°
Ø 2.40 - 2.80mm				
EP.24.100.40	2.40	100	0°	40°
EP.24.185.40	2.40	185	0°	40°
EP.28.265.40	2.80	265	0°	40°
EP.28.350.40	2.80	350	0°	40°
EP.28.435.40	2.80	435	0°	40°
Ø 4.20mm **				
EP.42.50.40	4.20	50	0°	40°
EP.42.180.40	4.20	180	0°	40°
EP.42.305.40	4.20	305	0°	40°
EP.42.435.40	4.20	435	0°	40°
EP.42.560.40	4.20	560	0°	40°
Ø 6.35 - 7.20mm **				
EP.63.180.40	6.35	180	0°	40°
EP.63.305.40	6.35	305	0°	40°
EP.63.435.40	6.35	435	0°	40°
EP.63.559.40	6.35	559	0°	40°
EP.72.730.40	7.20	730	0°	40°
EP.72.940.40	7.20	940	0°	40°

MIRROR TUBES				Protection sheath
Part No	Ø mm	W.L. mm	DoV	Part No
For Ecofix Ø 1.85mm				
EP.22.80-TM	2.2	80	90°	EP.22.80-SR
EP.22.127-TM	2.2	127	90°	EP.22.127-SR
EP.22.180-TM	2.2	180	90°	EP.22.180-SR
For Ecofix Ø 2.4-2.8mm				
EP.28.100-TM	2.8	100	90°	EP.28.100-SR
EP.28.185-TM	2.8	185	90°	EP.28.185-SR
EP.33.265-TM	3.4	265	90°	EP.33.265-SR
EP.33.350-TM	3.4	350	90°	EP.33.350-SR
EP.33.435-TM	3.4	435	90°	EP.33.435-SR
For Ecofix Ø 4.2mm				
EP.48.50-TM	4.8	50	90°	EP.48.50-SR
EP.48.180-TM	4.8	180	90°	EP.48.180-SR
EP.48.305-TM	4.8	305	90°	EP.48.305-SR
EP.48.435-TM	4.8	435	90°	EP.48.435-SR
EP.48.560-TM	4.8	560	90°	EP.48.560-SR
For Ecofix Ø 6.35-7.20mm				
EP.80.180-TM	8.0	180	90°	EP.80.180-SR
EP.80.305-TM	8.0	305	90°	EP.80.305-SR
EP.80.435-TM	8.0	435	90°	EP.80.435-SR
EP.80.559-TM	8.0	559	90°	EP.80.560-SR
EP.80.730-TM	8.0	730	90°	-
EP.80.940-TM	8.0	940	90°	-

** Compatible UV Light source

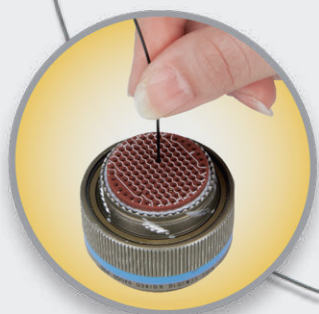
Microflex PRO flexible

Quickly and easily inspect cooling holes inside turbine blades, cannulas, catheters, needles, trocars, valves in medical devices, and many other micro manufactured parts. Use it with our Endo-Lux-T light (80 Watts) source for optimal results.

Our Microflex range offers a resolution range of 3,000 to 50,000, depending on the diameters, allowing excellent quality of vision.

As standard, we deliver models with a standard detachable 32mm ISO eyepiece with adjustable focus and optionally, 1 C-Mount ring, allowing a direct C-mount camera connection.

We can also study specific models according to your applications.

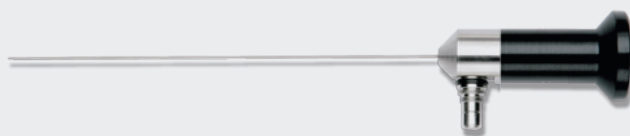


Detachable ocular with adjustable focusing



Description	Diameter	Working length	Pixels	Field of view	Direction of vision	Depth of field	Bending radius	Tube construction	Working temperature
MF-037-20	0.37 mm	200 mm	3 000	55°	0°	3 - 25 mm	25 mm	Polyamide	0 - 65°C
MF-037-100	0.37 mm	1 000 mm	3 000	55°	0°	3 - 25 mm	25 mm	Polyamide	0 - 65°C
MF-05-60	0.50 mm	600 mm	3 500	55°	0°	3 - 25 mm	25 mm	Polyamide	0 - 65°C
MF-05-100	0.50 mm	1 000 mm	3 500	55°	0°	3 - 25 mm	25 mm	Polyamide	0 - 65°C
MF-10-100	1.00 mm	1 000 mm	10 000	55°	0°	3 - 25 mm	25 mm	Polyamide	0 - 65°C
MF-10-150	1.00 mm	1 500 mm	10 000	55°	0°	3 - 25 mm	25 mm	Polyamide	0 - 65°C
MF-10-200	1.00 mm	2 000 mm	10 000	55°	0°	3 - 25 mm	25 mm	Polyamide	0 - 65°C
MF-12-80	1.20 mm	800 mm	30 000	55°	0°	3 - 25 mm	25 mm	Polyamide	0 - 65°C
MF-12-120	1.20 mm	1 200 mm	30 000	55°	0°	3 - 25 mm	25 mm	Polyamide	0 - 65°C
MF-20-100	2.00 mm	1 000 mm	50 000	55°	0°	3 - 25 mm	25 mm	Polyamide	0 - 65°C

Part No	Description
MF-037-20	Microflex flexible Ø 0,37 mm x 200 mm - 0°
MF-037-100	Microflex flexible Ø 0,37 mm x 1.000 mm - 0°
MF-05-60	Microflex flexible Ø 0,5mm x 600 mm - 0°
MF-05-100	Microflex flexible Ø 0,5mm x 1.000 mm - 0°
MF-10-100	Microflex flexible Ø 1,0mm x 1.000 mm - 0°
MF-10-150	Microflex flexible Ø 1,0mm x 1.500 mm - 0°
MF-10-200	Microflex flexible Ø 1,0mm x 2.000 mm - 0°
MF-12-80	Microflex flexible Ø 1,2mm x 800 mm - 0°
MF-12-120	Microflex flexible Ø 1,2mm x 1.200 mm - 0°
MF-20-100	Microflex flexible Ø 2,0mm x 1.000 mm - 0°
618 000 105	Camera / Microflex Cmount 27mm adapter
MF-VAL	Waterproof case for Microflex and video accessories



We offer on demand Microflex semi rigid with DoV 0° & 90°. Contact us for further details

LED-R portable light source

Portable high intensity source with white LED lamp. LED life is approximately 50,000 hours under normal use. Supplied with its charger with battery level indicator and rechargeable. Li-ion battery (approximately 500 charge cycles).

Technical data	
LED output	10 Watts (80,000 lux)
Intensity adjustment	Adjustable to 5 levels
Dimensions	Ø 24 mm x 140 mm
Weight with battery	130 gr
Battery	Li-Ion 2400 mHa 3.7V - type 18650
Average runtime	3-4 hours
LED lifetime	50 000 Hours

Part No	Description
LED-R	Bipol LED-R battery handle with rechargeable battery
LED-R-BAT	Spare battery LED-R



Mini LED portable light source

Portable light source with ACMI connection and LED light. 2 AA batteries (supplied). Adjustable illumination.

Technical data	
Illumination	10,000 to 55,000 lux (Min-max)
Dimensions	Ø 25 mm x 170 mm
Weight with batteries	120 gr
Average runtime	2-7 hours depending on the use

Part No	Description
605 000 565	Mini LED light handle with 2 AA batteries



LED-RA portable light source

Ultra-high-performance portable source with white LED lamp and continuously adjustable lighting. Bulb life is 50,000 hours. Rechargeable battery and wall/table support included. Compatible with portable video applications.

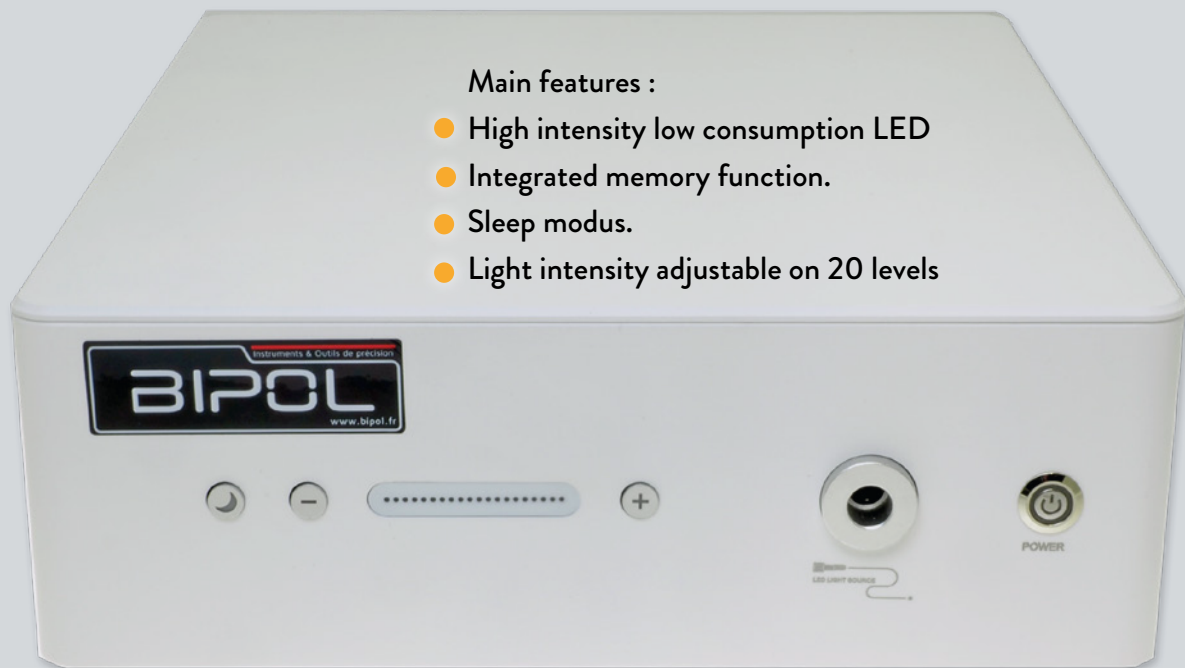
Technical data	
Illumination	15,000 to 180,000 lux (Min-max)
Dimensions	Ø 31mm x 150mm
Weight with batteries	148 gr
Battery	Rechargeable 3.7V, 220mAh Li-Ion
Average runtime	2-7 hours depending on the use

Part No	Description
605 000 570	Rechargeable RA LED handle & adjustable lighting. Comes with charging wall bracket.
605 000 571	Original streamlight battery for LED-RA



Main features :

- High intensity low consumption LED
- Integrated memory function.
- Sleep modus.
- Light intensity adjustable on 20 levels



Our Endo-lux T is a compact and powerful (80 watts) table light source with LED technology.

It comes with a continuous light adjustment (20 levels) and a standard RIWO output. It is compatible with video and photo applications and can be connected to our rigid endoscopes, fiberscopes.

Technical data

LED output	80 Watts
Illumination	800,000 lux
Light intensity	20 levels adjustable
Color temperature	5,000 - 7,000 k
Cable connection	RIWO
Power	110V-220V / 50 Hz-60Hz
Dimensions	355x315x120mm
Weight	5,2 kgs (11,46 lbs)
LED Lamp runtime	50,000 hours

Part No	Description
Endo-Lux-T	Bipol table light source Endo-lux T - 80 Watts - RIWO - bi tension 110/220 VA
Endo-Lux-C	Light cable SUPERFLEX Ø 4 x 1900mm Steel sheathing with outer PVC sheathing connection RIWO-STORZ/ACMI.
614 000 056	Y adapter for 2 cables
603 000 006	Rigid glass fibered probe Ø 5 x 120mm ACM Connection

Flexible light cable Endolux-C



Y adapter (for 2 cables or 1 cable and 1 probe)



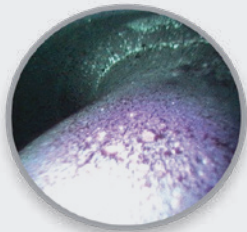
Glass fibered rigid probe



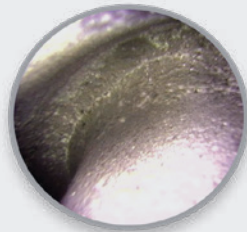
S-UV Light source

Compact, quiet, very powerful and engineered to achieve excellent results, the S-UV is your first choice for FPI (fluorescent penetrant inspection). This instrument's high-quality filters provide pure UV light without any white so even the smallest inclusions and flaws are clearly visible.

Switching from white light to UV and back is very easy using the front-panel button or footswitch. We built an automatic anti-glare function into the device to spare you any discomfort from the white light's glare.



UV Light



White light



Technical data

Lamp life	Mercury vapor 150W Up to 2,500 hours (digital counter)
Dimensions (LxHxP)	340 x 310 x 160mm
Weight	7.5 kg
Automatic power	90/250 VA-50/60 Hz
Delivered with foot switch UV/WL	

Part No	Description
613 000 006	Light source Endolux SUV-DC
613 000 016	Liquid light cable UV 5x1500mm

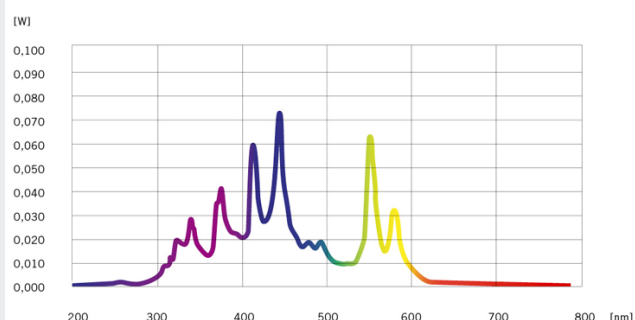


Liquid light guide

Position	Wavelength	Power*
UVA	320-400nm	1300mW
WL (white light)	400-700nm	400mW

(*) The radiation density (mW/cm²) depends on the distance between the radiation source and the observed area. Multiply by 5 the given values above to obtain the power in mW/cm² at the output of the standard cable Active diameter 5mm. Divide by the illuminated surface in cm² to have power in mW/cm² at other distances.

SPECTRUM



OPTICAL OUTPUT

	Spectrum	Power	Power Density
UVC	220-280 nm	500 mW	2,500 mW/cm ²
UVB	280-320 nm	2,000 mW	10,000 mW/cm ²
UVA	320-400 nm	3,500 mW	17,500 mW/cm ²
Violet	400-420 nm	1,300 mW	6,500 mW/cm ²
Blue	400-500 nm	5,000 mW	25,000 mW/cm ²
UVC-UVA	220-400 nm	6,000 mW	30,000 mW/cm ²
UVC-Blue	220-500 nm	11,000 mW	55,000 mW/cm ²

Our USB Camera was specially developed for use with industrial endoscopes. It connects directly to the USB Port of the any computer (windows 7.0 and up). Still images and videos can be captured via the camera interface of the computer.

The camera is supplied with a f:18mm video coupleur that will deliver accurate image and video rendering. It can also be connected with our converter to any HDMI external monitor.

EASY CONNECTION

The camera connects directly to the USB port of your computer using the Camera application for easy images and video recording



YouTube

AUTOMATIC AWB

2 buttons located on the camera allow image freezing and automatic white balance (AWB) adjustment



HDMI CONNECTION TO A MONITOR

The camera connects directly to the USB port of your computer using the Camera application for easy images and video recording



Camera delivered in carrying pouch with f:18 optical video coupler



Technical data

Resolution	1920x1080px
White balance	Automatic
Video signal	USB 2.0 / HDMI (with converter)
Frame rate	60 fps
Connection	C-Mount
Dimensions	Ø 40 mm x 55 mm
Weight	200 gr
Cable length	2m
OS compatibility	Windows 7 and up

Part No	Description
BIP CAM USB	Endo camera USB HD BIPOL - USB 2.0 with F:18 vieo coupler and pouch
HDMI-CONV	USB HDMI converter with power and HDMI cable for camera BIP CAM USB

Camera FV-35 HQ CCD

Compact high-resolution video camera specially developed for endoscopy video applications.

Equipped with a 1/2" sensor and an automatic electronic shutter, it allows the inspection of places with changing brightness. Very light (about 160 gr) with its shockproof housing, it will be ideal in workshop application, Research & Development or even in external maintenance intervention.

The video coupler (option) is compatible with all our rigid and flexible endoscopes.

Our FV35-HQ endocamera is compatible with P1 (7") video monitor

The TVSCOPE adapter allows it to be connected to an external monitor.

Technical data

CCD sensor	1/2" SONY
Resolution	800 TVL
White balance	Automatic
Video signal	PAL / NTSC
Power	12 DVC - unique cable
Connection	C Mount
Dimensions	Ø 50 mm x 90 mm
Weight	160 gr
Working temperatures	0°C to + 40°C

Part No	Description
618 000 184	Bipol FV35 HQ endocamera C-MOUNT - P1 compatible
P1	P1 videoscope - 7" screen
P1 - VID	Waterproof carrying case for Video Kit (camera - P1 - portable light source - Micro fiberscope/ endoscope)
619 000 012	Industrial Monitor 19" - 1280x1024 px
TV-SCOPE	External Monitor Connection Kit



Portable Monitor P1 with internal battery

Compatible with...



Monitor 19"



Video couplers

Our video coupler connect an endoscope to a C-Mount CCD camera to view live images on a monitor. They offer an extra wide field of vision. Compatible with all our CCD cameras.

Part No	Description
CPLR-F18	Video coupler F18 adjustable focusing
CPLR-F22	Video coupler F22 adjustable focusing
CPLR-F35	Video coupler F35 adjustable focusing



Support Magic arm

Articulated holder with central locking lever to be mounted on a bench thanks to its clamp.
Compatible with Rugged & P1 videoscopes.

Part No	Description
618 000 106	Magic arm articulated holder with clamp
618 000 111	Additional clamp (for videoscope holder)



Industrial video monitor 19"

Our professional industrial video monitors have been specially developed to meet the needs of video control in technical endoscopy and fibroscopy. Excellent contrast and high definition (1280x1024 pixels) will allow you to view on screen the interior of your parts in a great comfort of use without visual fatigue. Numerous inputs allow you to connect a variety of devices to these monitors. In addition to two BNC ports, you also have a VGA input and an HDMI input.

Part No	Description
619 000 102	19" Monitor



We offer special cases for transporting your video documentation systems and endoscopes. Please contact us.

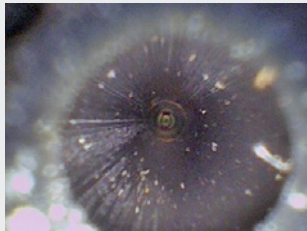


Micro videoscope PRO B

Ø 0.80, 0.95 & 1.2mm

The BIPOL PRO B micro videoscope is fitted with an ultra-fine probe, available in 0.8 mm, 0.95 mm, or 1.2mm diameters, allowing access to extremely narrow spaces. This exceptional slimness enables precise inspection of miniaturised and hard-to-reach components, ensuring optimal quality control in demanding sectors such as industry, automotive, aerospace, and medical.

Designed for the examination of micro-cavities and small-scale components, it is particularly well suited for inspecting heat exchangers, turbine blades, connectors, inverter modules for electric vehicles, printed circuit boards, fuel injectors, hydraulic manifold blocks and injection nozzles.



The high-resolution micro camera (160.000 px) is mounted on a flexible, non-articulating probe, offering excellent image clarity supported by an adjustable LED light source.

Highly versatile, the PRO B is compatible with the interchangeable probes in the PRO B range, allowing adaptation to various inspection requirements.

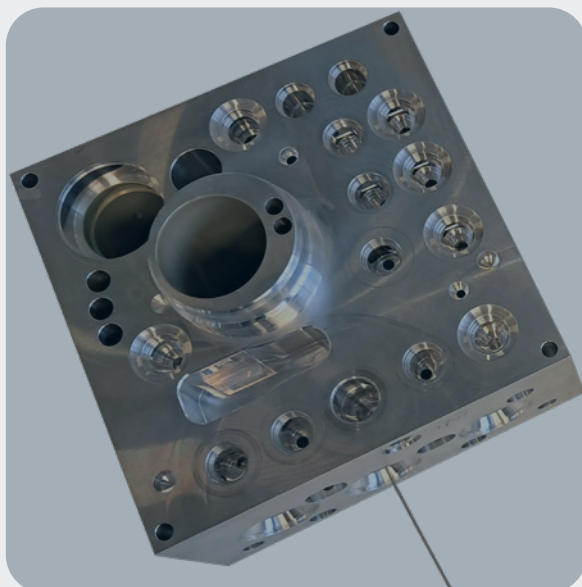
Images and videos can be easily captured using a dedicated button on the back of the device. A 32 GB Micro SD card enables storage of up to 32,000 images or 500 hours of video footage. An HDMI output allows the videoscope to be connected to an external monitor for full-screen viewing of live or recorded visuals. In addition, a Wi-Fi feature, compatible with Android devices, enables live streaming to an external tablet.

All-in-one solution

Adjustable LED Light, 5" screen,
photos & Videos



See video
application



Technical Data

	PRO B 08	PRO B 09	PRO B 12
Camera diameter	0.8 mm	0.95 mm	1.2 mm
Working length	0.5 m	1.0 - 2.0 m	0.5 - 1.0 m
Objective length	4.5 mm		
Articulation	No		
Camera resolution	160.000 px		
Direction of vision	0°		
Field of view	120°		
Focusing range	3-70 mm		
HDMI connection	Yes - cable supplied		
Lighting	Optical fibers		
Power	110-220 Va EU - USB - 12V cigaret lighter		
Image resolution	640x480 JPEG		
Video resolution	640x480 AVI		
Working temperature	-10°C à + 60°C		
Videoscope dimensions	350x155x59mm		
Net weight	0.6 kg (Weight with carrying case : 4.5 kg)		
Warranty	2 years		

standard case

Compact, waterproof, easy to carry around. Includes print for all standard accessories

Standard case includes.

1 SD card reader, 1 HDMI cable, 1 cleaning kit, 1 SD card 32 GB, 1 battery charger USB + 12V cigaret lighter plu g



BIPOL

CONTACT US



+33 (0)3 26 36 39 88



3 rue Saint Rémi
51430 BEZANNES FRANCE



info@bipol.fr
www.bipol.fr