

BIPOL

Video Pole Camera C-WS8

Our C-WS8 pole camera provides a reliable inspection solution for security forces, emergency responders, law enforcement agencies, special operations units, as well as industrial professionals.

Equipped with a 12 MP gooseneck camera, it enables detailed inspections of buildings, containers, infrastructure such as bridges, vehicles including trucks, and a wide range of industrial environments.

Featuring high-intensity white LED lighting, the system ensures optimal visibility and can be extended up to 8 meters, offering enhanced reach and operational flexibility.



Extendable from 1.6 to 8m
CARBON FIBER POLE

GOOSENECK CAMERA
12 MP White LEDs

7" SCREEN
128 GB SD Card

8 meters Pole extension Camera



Easy access to controls:
Light adjustment
Photo & video recording



CARBON EXTENSION POLE

Extensible up to 8 m
(Retracted pole 1.6m)



GOOSENECK CAMERA

White LEDs, manually
adjustable in all directions.

**7.0" LCD
Screen**

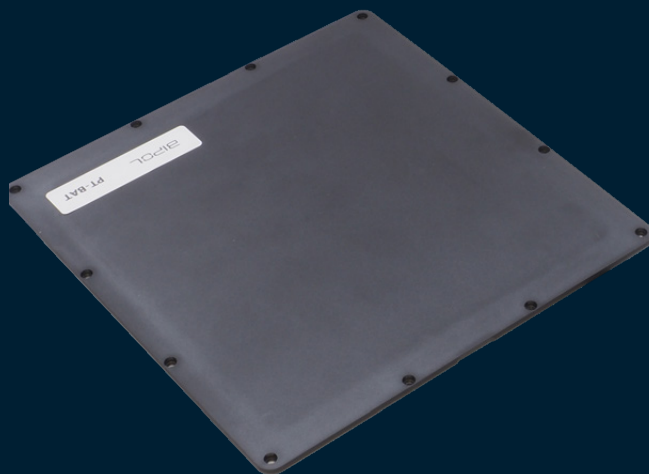


Technical Data

Display	7 inch 1280 * 800 px
Dimensions	211x41x28mm 800 gr
Brightness	500 cd/m2
Video In	5MP AHD
Video Out	HDMI 1080P
Video recording	MP4
Interface	Type C
Memory card	128 GB TF card (accepts up to 256GB)
Power Supply	DC 12V 2.5A
Battery	5000mAh(detachable)
Complete working time	4-5 hours
Waterproof grade	IP65
Camera Resolution	12 MP - White LEDs adjustable
Case dimensions	L*W*H 119x14x21cm - 7.5 KG

Extension pole

Material	Carbon fiber
Unfolded length	8.0m
Folded length	1.6 m



C-WS8 Set

WHAT WE DELIVER

1 Pole extension 8m - 1 Gooseneck camera white LEDs
- 1 monitor 7.0" - 1 AC charger - 1 SD Card 128 GB
1 rugged carrying case - 1 instruction manual - 1 cleaning kit BIPOL.

SPARE DETACHABLE BATTERY
IN OPTION

