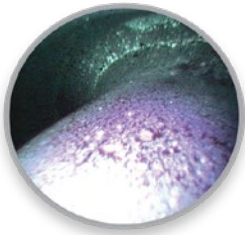


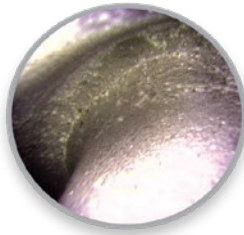
For ultraviolet radiation inspections and parts control (cracks for example), we offer a complete and proven solution of UV endoscopes.

We provide after-sales service as well as rehabilitation of our UV sources and rigid endoscopes.

Switching light source UV-White light with mercury vapor lamp 200W. Light intensity variation at constant light temperature. Video compatible and standardized according to worldwide aeronautical standards for fluorescence inspection and non-destructive testing.



UV light



White light



Technical data	
Lamp life	Mercury vapor 150W Up to 2,500 hours (digital counter)
Dimensions (LxHxP)	340 x 310 x 160mm
Weight	7.5 kg
Automatic power	90/250 VA-50/60 Hz
Delivered with foot switch UV/WL	

To order	
Part No	Description
613 000 006	Light source Endolux SUV-DC
613 000 016	Liquid light cable UV 5x1500mm

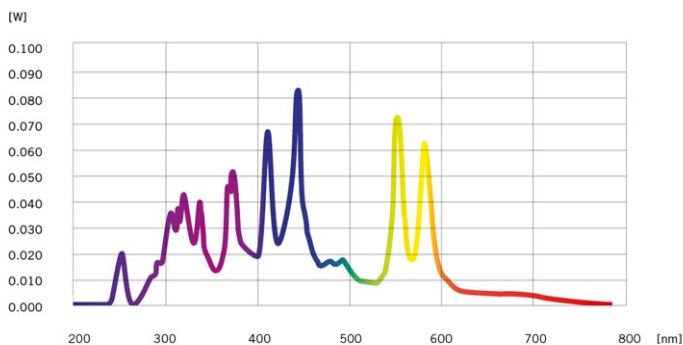


Liquid cable

Position	Wavelength	Power*
UVA	320-400nm	1300mW
WL (white light)	400-700nm	400mW

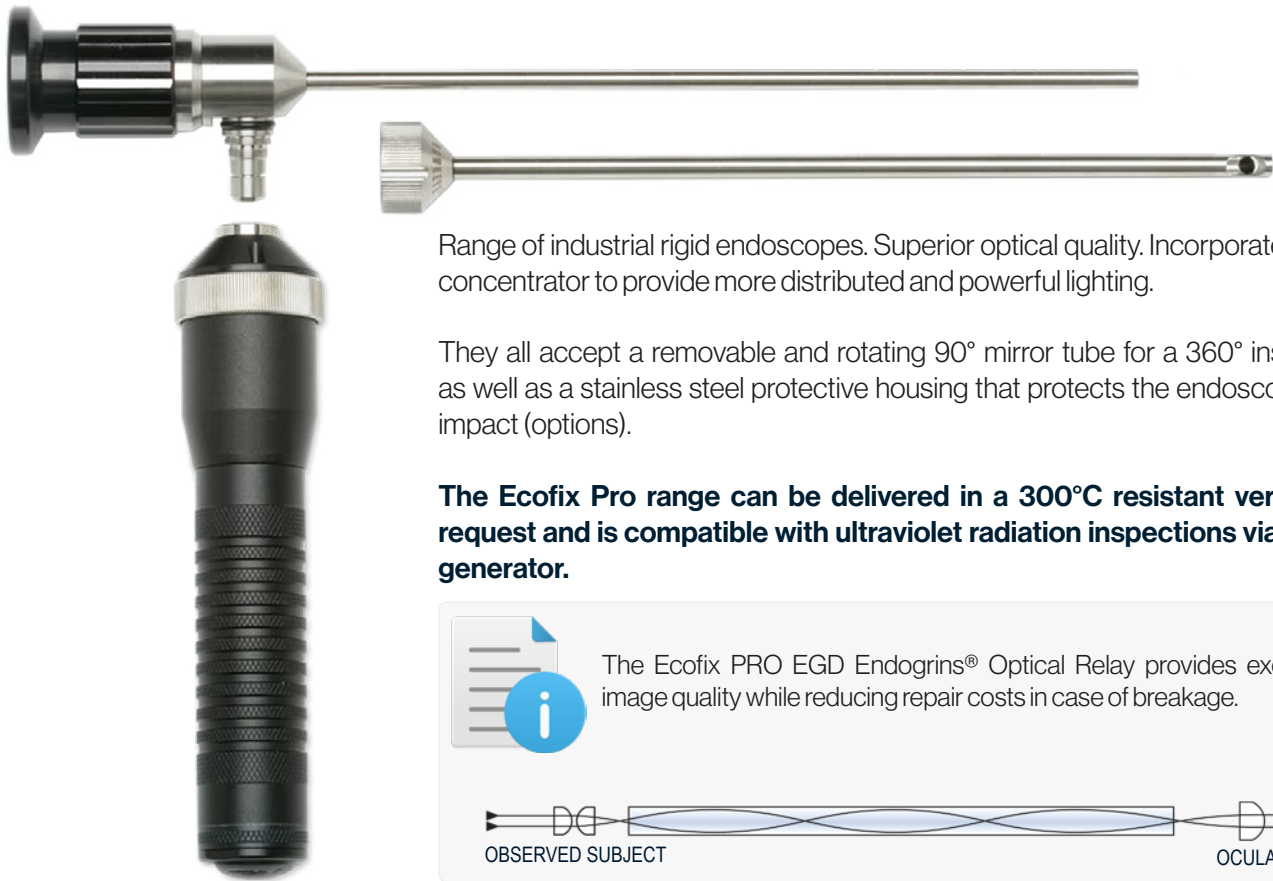
(\* ) The radiation density (mW/cm<sup>2</sup>) depends on the distance between the radiation source and the observed area. Multiply by 5 the given values above to obtain the power in mW/cm<sup>2</sup> at the output of the standard cable Active diameter 5mm. Divide by the illuminated surface in cm<sup>2</sup> to have power in mW/cm<sup>2</sup> at other distances.

## SPECTRUM



## OPTICAL OUTPUT

	Spectrum	Power	Power Density
UVC	220-280 nm	500 mW	2,500 mW/cm <sup>2</sup>
UVB	280-320 nm	2,000 mW	10,000 mW/cm <sup>2</sup>
UVA	320-400 nm	3,500 mW	17,500 mW/cm <sup>2</sup>
Violet	400-420 nm	1,300 mW	6,500 mW/cm <sup>2</sup>
Blue	400-500 nm	5,000 mW	25,000 mW/cm <sup>2</sup>
UVC-UVA	220-400 nm	6,000 mW	30,000 mW/cm <sup>2</sup>
UVC-Blue	220-500 nm	11,000 mW	55,000 mW/cm <sup>2</sup>



Range of industrial rigid endoscopes. Superior optical quality. Incorporates a light concentrator to provide more distributed and powerful lighting.

They all accept a removable and rotating 90° mirror tube for a 360° inspection as well as a stainless steel protective housing that protects the endoscope from impact (options).

**The Ecofix Pro range can be delivered in a 300°C resistant version on request and is compatible with ultraviolet radiation inspections via our UV generator.**



The Ecofix PRO EGD Endogri<sup>®</sup>s Optical Relay provides excellent image quality while reducing repair costs in case of breakage.



**ECOFIX PRO**



**Rotating & Removable mirrors**

ENDOSCOPES ECOFIX PRO				
Part No	Diametre mm	WL mm	DoV	Field
Ø 4.20mm				
604 000 490	4.20	50	0°	40°
604 000 502	4.20	180	0°	40°
604 000 503	4.20	305	0°	40°
604 000 504	4.20	435	0°	40°
604 000 505	4.20	560	0°	40°
Ø 6.35mm				
604 000 506	6.35	180	0°	40°
604 000 507	6.35	305	0°	40°
604 000 540	6.35	435	0°	40°
604 000 541	6.35	559	0°	40°

MIRROR TUBES & STAINLESS STEEL SHEATH			
Part No	Diameter mm	WL mm	DoV
Mirror Tube for Ecofix Ø 4.2mm			
604 000 491	4.8	50	90°
604 000 123	4.8	180	90°
604 000 124	4.8	305	90°
604 000 125	4.8	435	90°
604 000 272	4.8	560	90°
Mirror Tube for Ecofix Ø 6.35mm			
604 000 545	8.0	180	90°
604 000 546	8.0	305	90°
604 000 547	8.0	435	90°
604 000 548	8.0	559	90°



Part No	Description
604 000 214	Ecofix aluminium case (for endoscope up to 435 mm)
604 000 217	Ecofix PRO aluminium case (for endoscope up to 560 mm)
B-C-KIT	BIPOL cleaning kit: 1 spray - 1 packs of cotton swabs
604 000 208	Right angle adapter 90° rotable L=100mm