

High Performance Multifunctional Industrial Videoscope

PROX-8M



- 8-inch IPS industrial wide-view HD LCD touch screen
- 1,000,000 pixel HD industrial camera
- Electric joystick + touch screen virtual joystick
- Knob type multifunction key
- 180° rotatable stand, can be hanged and be supported
- Simultaneously display on an external screen with HDMI cable
- Built in wireless Bluetooth, 4G and WiFi modules
- 3.5mm Audio interface output (optional)
- Remote control module (optional)
- 4 corners TPU rubber coated anti-collision
- Expandable large storage space
- 3D measurement function (premium version)
- Picture editing function
- Super long service time of power supply

**Knob type multifunction key,
Original patented technology**

The PROC68 is a brand new high performance industrial videoscope. Through the combination of electronic joystick and virtual joystick on the touch screen, this instrument provides better controllability, flexibility and comfort. It allows observation of areas that are difficult to be observed directly through the human eyes, and provides better guarantee for product quality and instrument operation security.

This product is applicable to fields such as aeronautics, astronautics, energy, electric power, chemistry, machinery, car, military industry, special inspection,...

2.Super High Performance

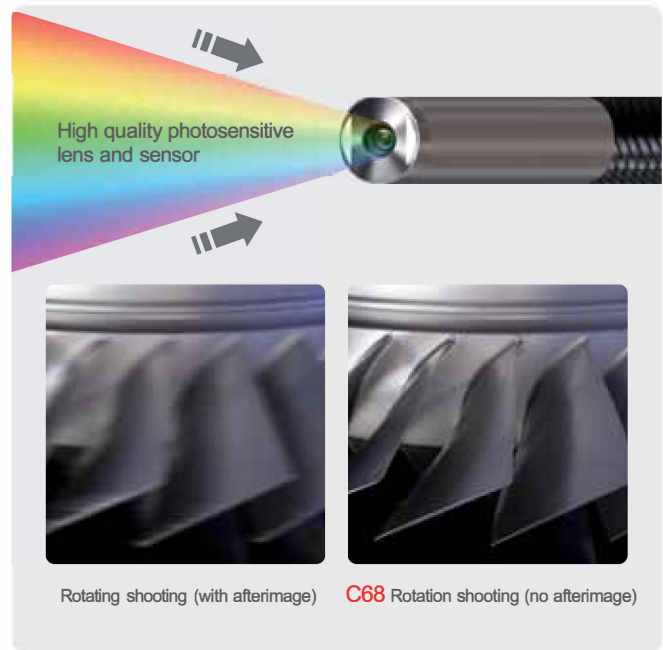
8-inch IPS industrial wide-view HD LCD touch screen

Effectively restore real colors and present more vivid images. Larger visual angle, good image quality in all directions, effectively reduce visual fatigue and improve observation comfort. The touch screen is sensitive and easy to operate, which greatly improves the work efficiency.



1,000,000 pixel HD industrial camera

With built-in high-quality image sensor, the image quality is clearer and more delicate, showing rich details, the video image is smoother, and the picture has no delay and drag, which is convenient for rapid and accurate identification of subtle defects.



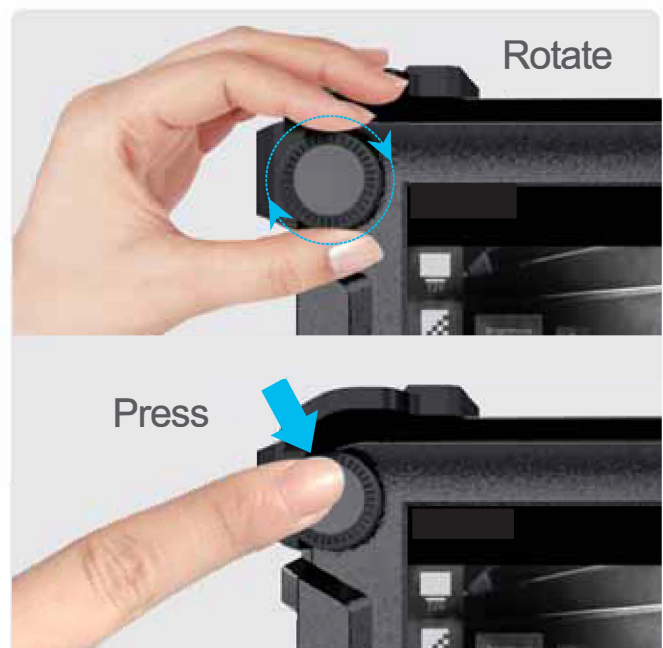
Electric joystick + touch screen virtual joystick

The electric joystick is matched with the touch screen virtual joystick to control the probe move accurately, providing a better control experience. Turn on the probe coordinate display function to observe the current bending angle of the probe in real-time. Users can also configure mechanical joystick as required.



Knob type multifunction key

The unique design of knob type multifunctional key (patented) makes it easier to switch and set menu functions.



2.Super High Performance

180° Rotatable stand

Equipped with 180°rotatable support,it can be suspended and supported,which is convenient to adjust the observation angle,and is suitable for various detection scenes.



Real time image comparison function

By comparing and observing the difference between the real-time detection image and the static image,it is more convenient to find and distinguish the possible surface defects of the detected object in time.



Simultaneously display on an external screen with HDMI cable

It can simultaneously display on an external screen with HDMI cable, which is convenient for multi person consultation and more conducive to accurate judgment of on-site conditions.



Built in wireless Bluetooth, 4G and WiFi modules

Built in wireless Bluetooth module to transfer pictures or video files more conveniently and quickly.Built in 4G and WiFi modules can upload and download data through wireless networking.



2.Super High Performance

Remote control module (optional)

The expandable remote control module controls the host through the terminal to facilitate the effective transmission of information and remote and efficient cooperation.



Four corner TPU rubber coated anti-collision design

The four corners of the host adopt TPU rubber coated anti-collision design,with round and beautiful appearance,more shock and fall resistance,effectively strengthening the protection of the equipment, and more durable.



Expandable large storage space

The host memory is 2GB,and the standard storage space is 16GB, which can be expanded to 64GB, with larger storage space and faster access speed.Equipped with 2-way USB interfaces,data can be stored through external USB disk.



3D measurement function (premium version)

The binocular stereo imaging measurement system can measure the length,vertical,depth,and multisegment.The measurement accuracy can reach 0.01mm and the error is $\leq 5\%$.



2.Super High Performance

Picture editing function

Text and graphic notes can be added to the picture,such as full screen text mark,graffiti overlay,handwritten lines,arrows,boxes,circular signs, text notes,etc



Super long service time

The replaceable high-capacity rechargeable lithium battery and charger are adopted to ensure the long-term service time.



3.Technical Specification

Host system	
Instrument Type	C68 series high-performance industrial videoscope
Display Screen	8 inches IPS industrial wide-view HD LCD touch screen
Monitor Resolution	1024*768
User Interface	Navigation menu of the touch screen and physical buttons
Image Display	Supports real-time 5x magnification and Full Screen Display/Center Display mode
LED Brightness Level	9 levels adjustable
Function Modes	Original Color mode,Black-And-White mode,Negative mode,High Color Density mode,Close-up mode and Remote mode
Brightness of Screen Backlight	Adjustable
Image Recording	Equipped with photography and videography functions;supports image capture during video recording
Freeze Screen (Stop Motion)	Supported
Watermark Setting	Supports time/image/directory watermark
Image Zoom	Supports image zooming through Pinch Gesture
File Format	Image JPEG/BMP, video mp4
Image Rotation	Rotation of 0°, 90°, 180°, 270°
File Management	Able to review videos and images in full screen,and execute Delete/Rename/View Details operations
Image Preview	List
Flash Exposure Function	Adjustable flash exposure brightness level (Level 0-5) and latency time (0S-16S)
Annotation	Handwritten lines,arrows,boxes,circle labels,text annotations
RAM	2GB
Medium of Memory Storage	Standard memory space 16GB which can be expanded to 32GB or 64GB and can be connected with external USB flash disk
Cross-ruler	Supported
Probe Coordinates Display	/
Probe Angle Bend Display	/
Virtual Joystick Control	/
Export of Internal Storage Data	Supported
Bluetooth Connectivity	Standard
WiFi Module	Standard
Cable Interface	Optional
4G Module	Optional
3D Measurement Function	Premium
Languages and Input Methods	More than ten languages such as Simplified Chinese,Traditional Chinese,English,Japanese,Korean,French,German,Portuguese,Spanish,Russian,Italian,Dutch.Input methods can be downloaded upon activation of WiFi
Video Output	VGA (optional)/HDMI (standard) port
Audio Output	3.5mm headphone jack (standard)
System Security Protection	Password protection
External Dimension	245mm*195mm*95mm
Gross Weight	2.85kg (including batteries)
Weight of the Handle	1.1kg

Insertion Tube System	Standard Version						Premium Version (Measurement Insertion Tube)	
Probe Diameter (error ±0.1mm)	Φ2	Φ2.8	Φ3.9	Φ4.8	Φ6	Φ8	Φ4	Φ6
Camera Pixels	160,000	160,000	1,000,000	1,000,000	1,000,000	1,000,000	1,000,000	1,000,000
View Direction	Forward View	Forward view /side view					Forward view	Forward view / side view
Depth of View	5-50mm	5-50mm	5-100mm	8-80mm	8-80mm	8-80mm	5-100mm	8-80mm
View Angle	120°	120°/70°	120°/70°	120°/70°	120°/70°	120°/70°	80°	100°
Working Length of Insertion Tube	1-1.5m	1-3m	1-3m	1-3m	1-10m	1-10m	1-3m	1-7m
Lighting Mode	Front LED/Rear-mounted LED, fiber light guide (optional)						Rear-mounted LED, fiber light guide	
Angle of Probe Bend in One Direction	≥160° (eg: for 6mm, 1m tube)							
Measuring Function	Without				Supports length, vertical, multi-segment, and depth measuring			
3D Measurement Accuracy	/				0.01mm			
3D Measurement Error	/				5%			
Probe Steering Ability	360° all-way articulation							
Material of Insertion Tube	Wear-resistant tungsten wire braided tube							
Steering Control	Mechanical control/electronic control				Electronic control			
Probe Lock	/				Supported			
Probe Reset	/				Supported			
Stepping Function	/				Supported			
Speed Regulation	/		Supported (Speed of the probe's movement can be controlled in Lock Position Step mode.)					
Compatibility	The insertion tube is replaceable							
Probe Waterproof	IP67							
Operating Environment								
Operating Temperature of System		-20°C-50°C						
Operating Temperature of Probe		-20°C -60°C						
Storage Temperature		-40°C-60°C						
Relative Humidity		15%-90%						
Power Supply Parameters								
Power Supply		Input: 220±10%V 50Hz mains supply,Output: DC15V						
Battery Capacity		7.4V, 9600mAh						
Operating Time		For electric joystick: ≥4 hours; for mechanical joystick: ≥6 hours						
Standard Configuration		1 instrument case, 1 host machine, 1 insertion tube, 32G USB flash disk, 2 rechargeable lithium battery packs, 1 power adapter, 1 desktop charger, 1 HDMI cable, 1 host cable, 1 user manual						
Customized Service								
1. The length, diameter and lighting method of the insertion tube can be customized according to the customer's requirements.								
2. Scale can be added on the insertion tube.								
3. Software functions are customizable.								
4. The lens are customizable.								