

BIPOL

Video Pole Camera

PT L

Our PT-L pole camera offers a reliable inspection solution to security forces, rescue and emergency units, police, special forces and to the industrial sector.

Delivered with a motorized rotative cameras with talk/back function, it allows inspection of buildings, containers, infrastructures such as bridges, trucks, or industrial sites among others.

2 types of illumination are available : White LEDs or Infrared 940 Nm

PAN & TILT CAMERA

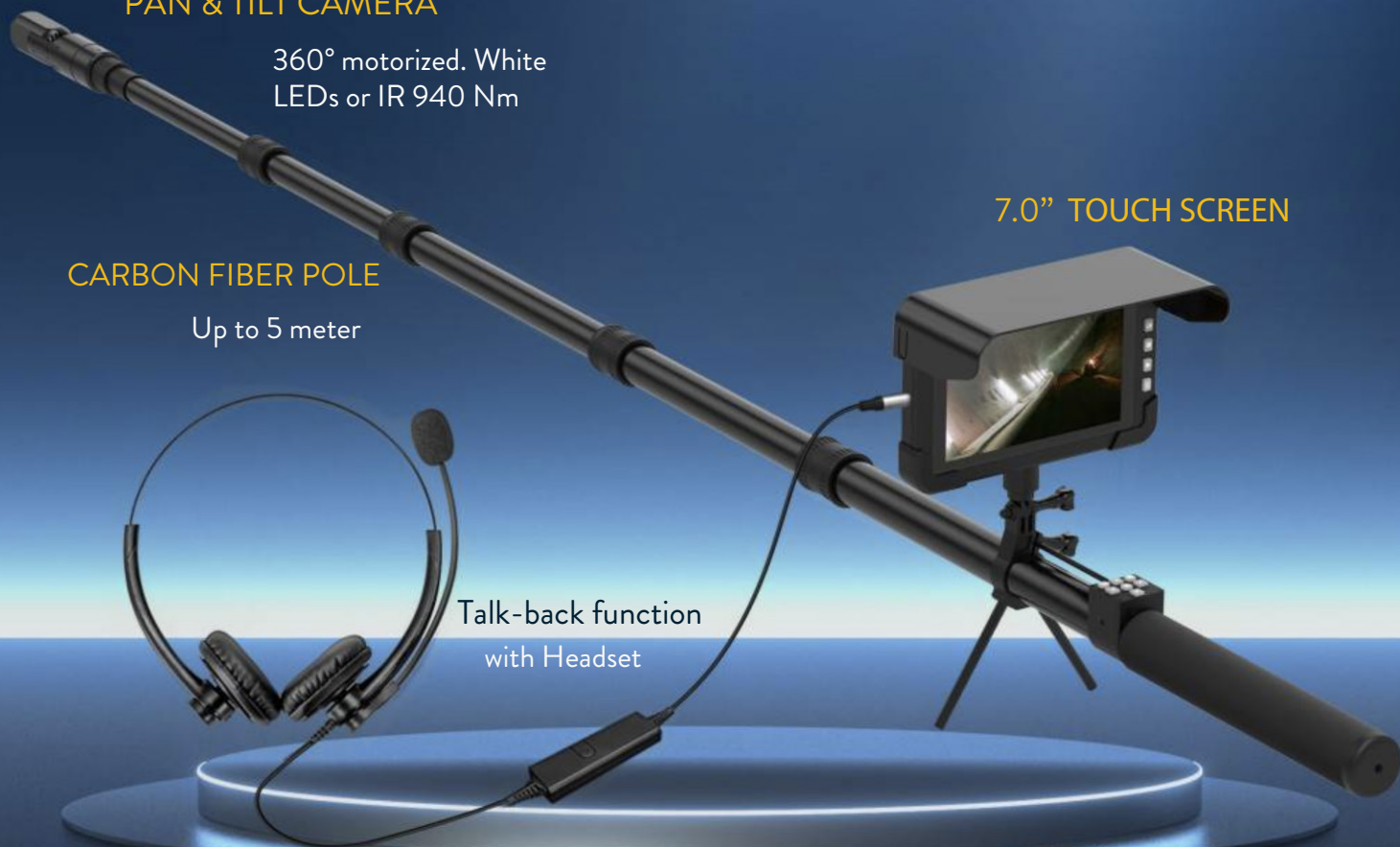
360° motorized. White LEDs or IR 940 Nm

7.0" TOUCH SCREEN

CARBON FIBER POLE

Up to 5 meter

Talk-back function with Headset



Pan & Tilt rotative Camera



PAN&TILT IP65 CAMERA WITH TALK BACK

White LED or IR 940 Nm



PT-CIP65W
PT-CIP65IR94

TALK BACK FUNCTION
WITH HEADSET

Allows recording &
dual way communication

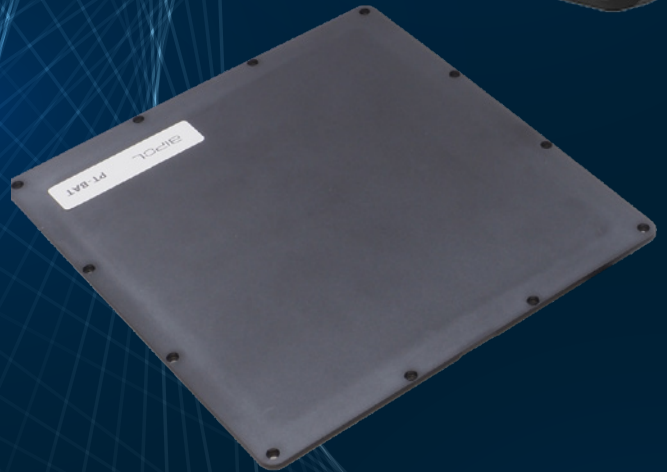


CARBON EXTENSION POLE

Extensible from 1.38 m to 5m

7.0" LCD Touch Screen

Rubber protective cover to 4 corners, can be removed
Waterproof grade: IP65
Neck strap is removeable and adjustable
7 inch full view(1280*800pix) IPS Touch screen
Touch screen and buttons both work
Video input:AHD and CVBS video input,TVI and CVBS video input
Conector: M12 4pins (Same as DS908/DS98)
Video Output: HDMI 1080P
Support 4K,2K,1080P Record, photo, playback,10 times zoom
Video compression format:H.264
Max Storage: up to 256GB TF card
Compressed video and audio are synchronous
Built-in 4200mAh high capacity Li-battery, Battery is exchangeable
Working Voltage: DC 12V 2A
Support 12 Voltage power output for camera
Supports multi-language.



SPARE DETACHABLE BATTERY
IN OPTION

WHAT WE DELIVER

PT L Set

Shockproof case with
prints for accessories



1 IP65 P&T camera white LEDs or IR 940NM with talk back function - 1 touchscreen monitor 7.0" - 1 HDMI cable - 1 AC charger - 1 USB Cable - 1 SD Card 32 GB - 1 rugged carrying case - 1 instruction manual - 1 cleaning kit BIPOL.

Technical Data

7.0" Touch Screen Recording Monitor

Display	7 inch 1280 * 800 px
Touch screen process	In cell original capacitive touch
Dimensions	211x41x28mm 800 gr
Brightness	500 cd/m2
Video In	5MP AHD
Video Out	HDMI 1080P
Video recording	MP4
Interface	Type C
Memory card	32 GB TF card (accepts up to 256GB)
Power Supply	DC 12V 2.5A
Battery	4200mAh(detachable)
Complete working time	4-5 hours
Waterproof grade	IP65
Case dimensions	L*W*H 119x14x21 cm - 7.5 KG

IP65 P&T Talk-back Camera

Camera Resolution	5MP Cmos 2560*1944 PX
light source	12 LEDs - IR 940nm
Minimum illumination	0.0001Lux/F1.2
Lens	2.8mm F2.0 134.7°
Focal length	20 cm 100 cm
PTZ rotate	Horizontal: 360 ° circular Vertical:270°
Dimensions	ø39mm ,Length :153mm
Audio recording	48dB, 1W speaker (suitable 300 m2)

Pole camera

Material	Carbon fiber
Unfold length	5.0 m
Fold length	1.38 m

How to order

PT-L	Telescopic Pole camera 5m 7" LCD Screen in case - White LEDs Pan & tilt Camera
PT-L-IR	Telescopic Pole camera 5m 7" LCD Screen in case - IR 940 NM Pan & tilt Camera
PTL-BAT	Spare battery for 7" Screen
PT-CIP65W	Camera IP65 Pan and Tilt White light with talk back function
PT-CIP65IR94	Camera IP65 Pan and Tilt Infrared 940 NM with talk back function